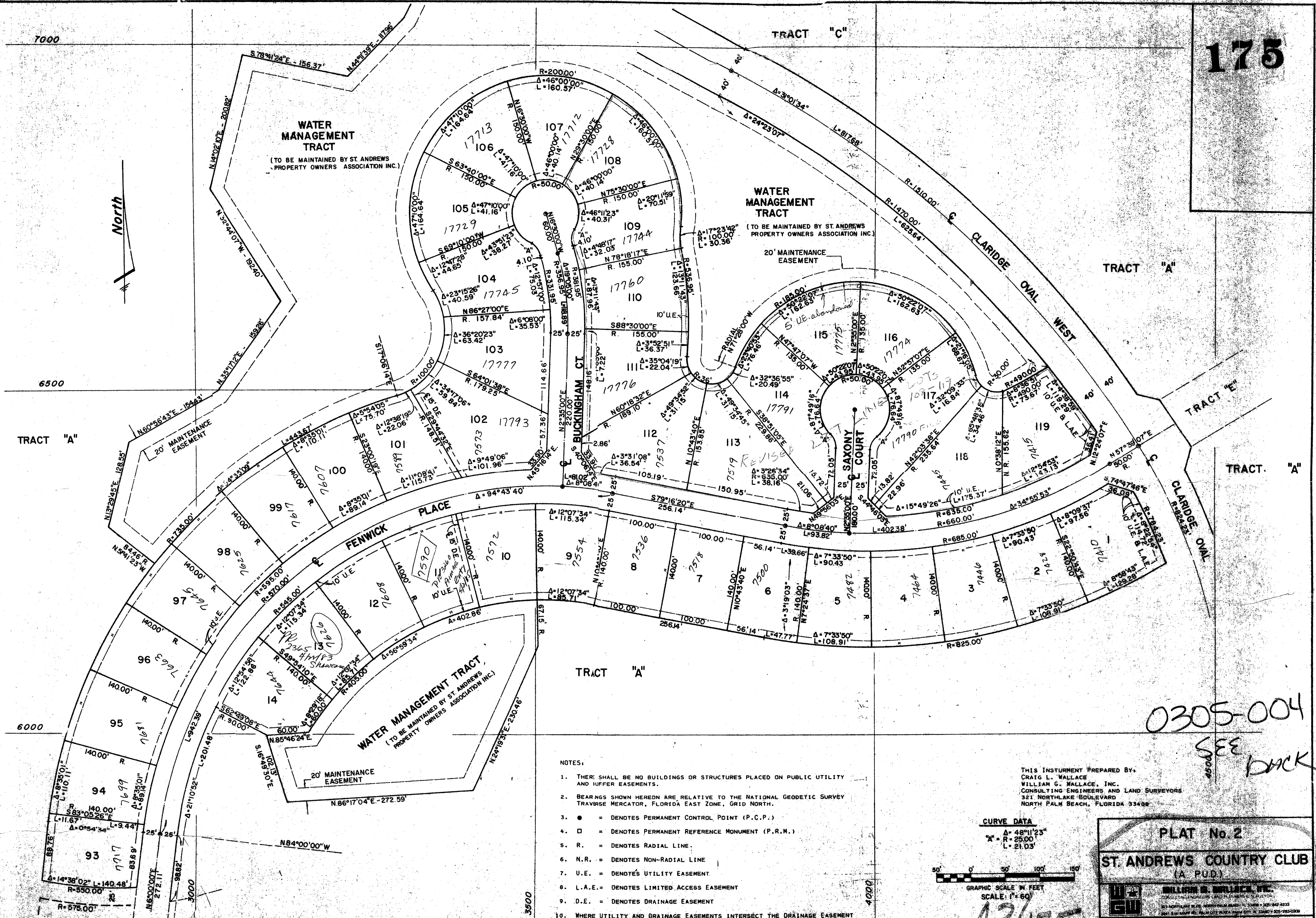


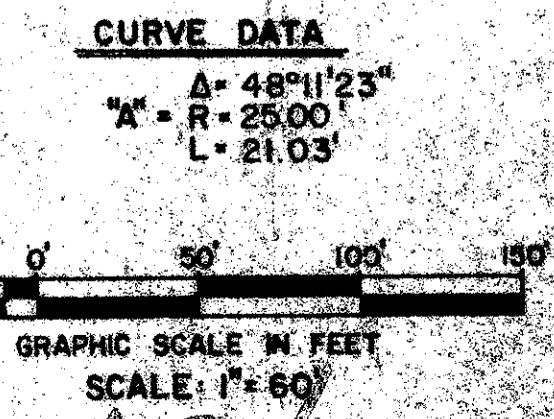
43/175

175



- NOTES:
1. THERE SHALL BE NO BUILDINGS OR STRUCTURES PLACED ON PUBLIC UTILITY AND UTILITY EASEMENTS.
 2. BEARINGS SHOWN HEREON ARE RELATIVE TO THE NATIONAL GEODETIC SURVEY TRAVERSE MERCATOR, FLORIDA EAST ZONE, GRID NORTH.
 3. ● = DENOTES PERMANENT CONTROL POINT (P.C.P.)
 4. □ = DENOTES PERMANENT REFERENCE MONUMENT (P.R.M.)
 5. R. = DENOTES RADIAL LINE.
 6. N.R. = DENOTES NON-RADIAL LINE
 7. U.E. = DENOTES UTILITY EASEMENT.
 8. L.A.E. = DENOTES LIMITED ACCESS EASEMENT
 9. D.E. = DENOTES DRAINAGE EASEMENT
 10. WHERE UTILITY AND DRAINAGE EASEMENTS INTERSECT THE DRAINAGE EASEMENT SHALL TAKE PRECEDENCE.
 11. THERE SHALL BE NO BUILDINGS OR THE PLANTING OF TREES OR SHRUBS ON DRAINAGE EASEMENTS.

THIS INSTRUMENT PREPARED BY:
 CRAIG L. WALLACE
 WILLIAM G. WALLACE, INC.
 CONSULTING ENGINEERS AND LAND SURVEYORS
 321 NORTHLAKE BOULEVARD
 NORTH PALM BEACH, FLORIDA 33408



0305-004
 SEE BACK

PLAT No. 2

ST. ANDREWS COUNTRY CLUB
 (A PUD)

WILLIAM G. WALLACE, INC.
 CONSULTING ENGINEERS AND LAND SURVEYORS
 321 NORTHLAKE BOULEVARD
 NORTH PALM BEACH, FLORIDA 33408

FIELD	D.M.	307.40	J.B.S. (302)	F.R.	PG.
OFFICE	S.D.	0476	1-10-81	DWG. NO.	80-789
CHKD.	CLM	RE		SHEET	6 OF 9

43/175

SEE SHEET 7